

## Case Height Adjustment Mechanism by Armin Schertlen

The CHAM consists of five 3-D printed parts.  
You will also need:

- two 6mm Rods, 150mm length
- 220mm long T8 threaded rod with T8 nut
- (optional) six oilless bushings 6x8x8 mm

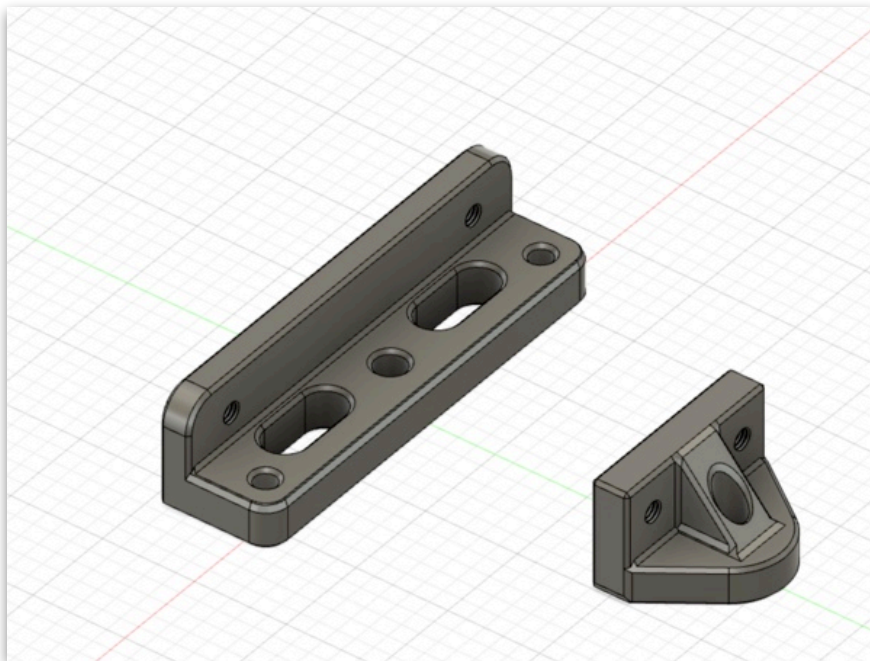
(my) Printer settings:

- PETG
- Layer height 0,2 mm
- Perimeters 3
- Infill 25%
- no Supports

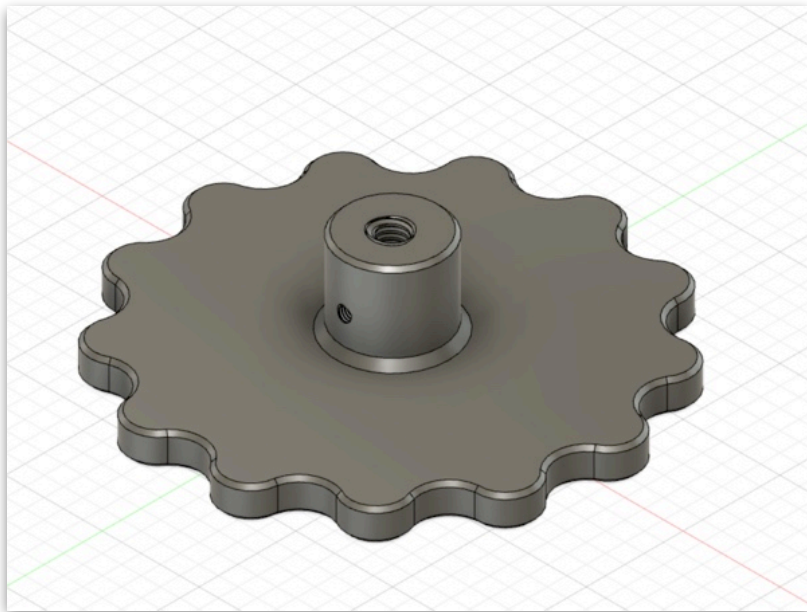


### 3-D Parts

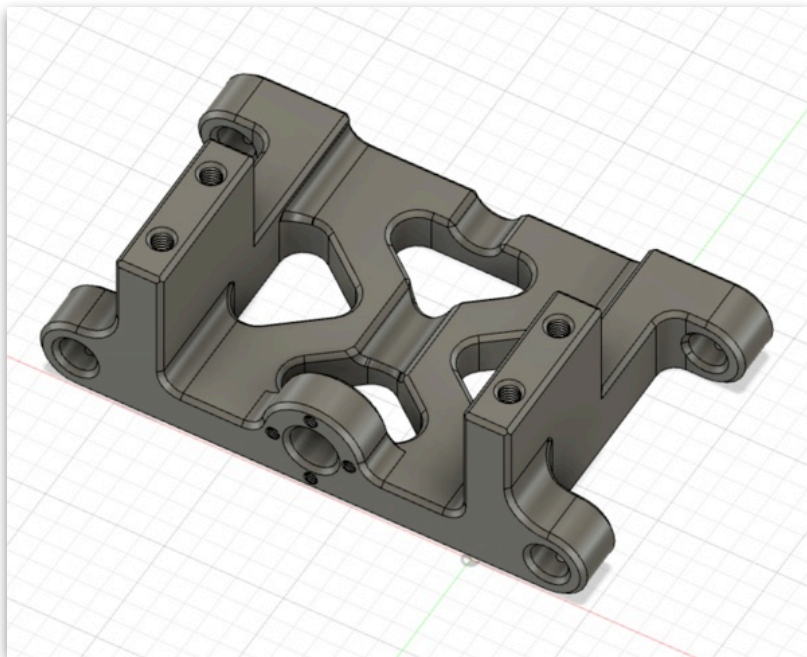
top/middle/lower mount (top & middle are identical)



Wheel

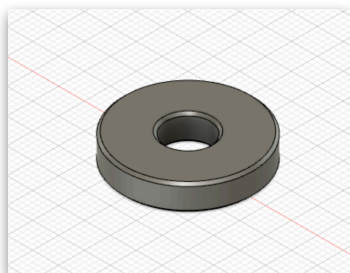


Slider

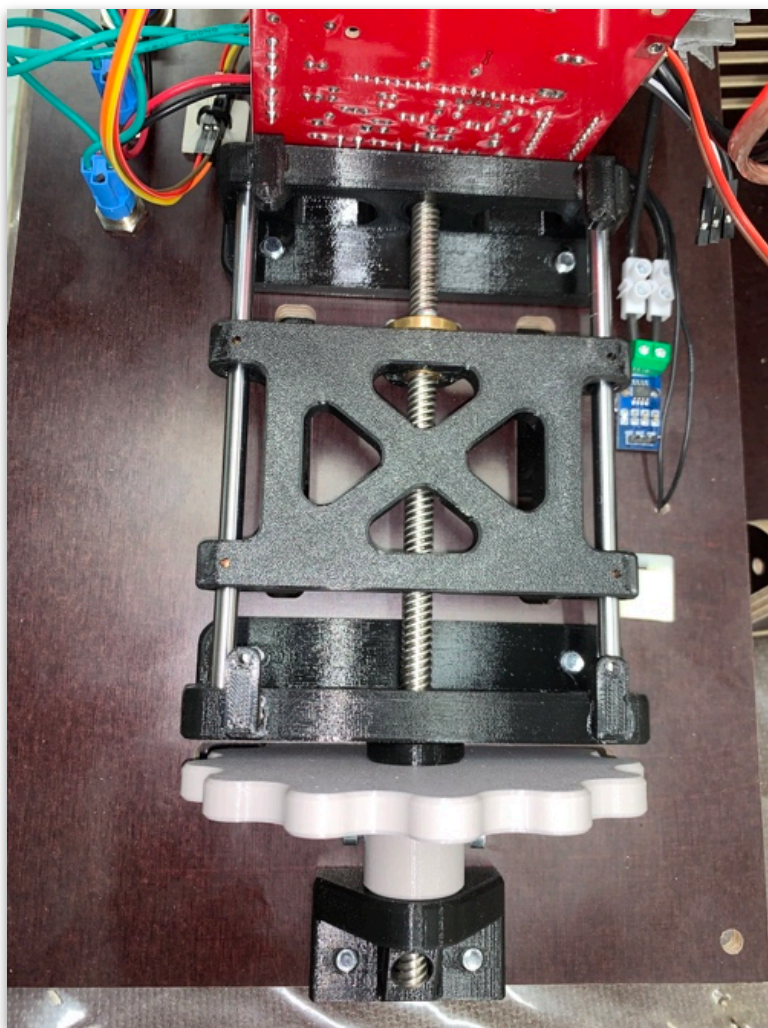


There are two slider-versions, with or without bushings (for the rods).  
Either one is doing the job.

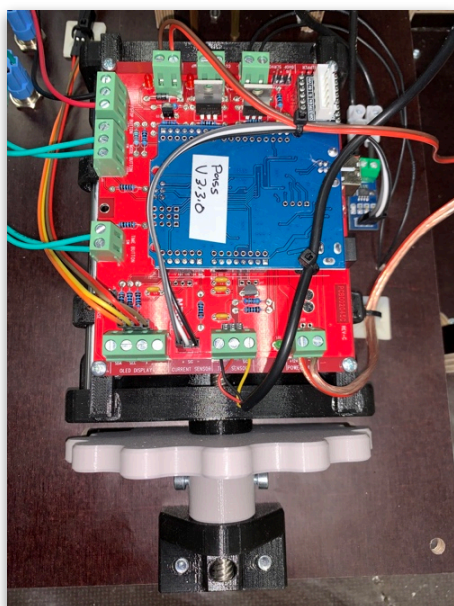
Washer



## Assembled CHAM



MGNZ-Board is mounted right on top.



Notes:

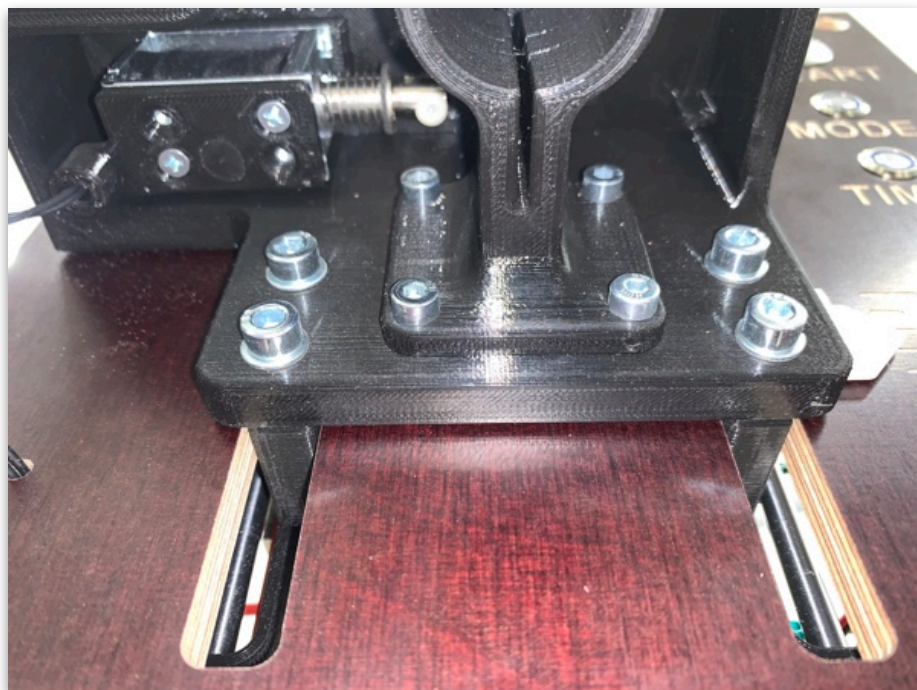
The T8 thread (Wheel) is a very tight fit. You need a bit of „force“ to screw the threaded rod into the wheel. Decide yourself, whether you need the lock screws or not.

All threads are ISO-metric.

top and middle mount : threads/bore are 87mm apart  
lower mount : threads/bore are 32mm apart

You may shorten the rods, travel range is way too much - at least for my needs.

Case dropper shelf simply screwed onto the CHAM



happy annealing

Armin  
Germany, Feb. 2022